

Syllabus

SQL for PRIMAVERA Introduction



Coordination

PRIMAVERA Academy

Recipients

Technicians and users seeking
to acquire fundamental skills in
SQL and SQL SERVER database

Minimum number of participants

6

Pre-requirements

-

Duration

2 days

Credits: 100

For PRIMAVERA certification
purposes

Objectives

To provide the participants with knowledge on Database Administration in SQL Server environment and the handling of SQL language vital for maintenance and solving possible problems with Databases associated with PRIMAVERA applications.

Training Plan

SQL Server Administration

SQL Server Agent role

System Databases

Administration Tools

- Enterprise Manager
- SQL Server Registration

Data Maintenance

Configuration of the SQL Server Agent Service

Automation of tasks through Jobs implementation

Security in SQL Server

- Logon to SQL Server (sa)
- User Groups
- SysAdmin User

Fundamental SQL concepts

DML Basic Notions

SQL Terminology

SQL Standard

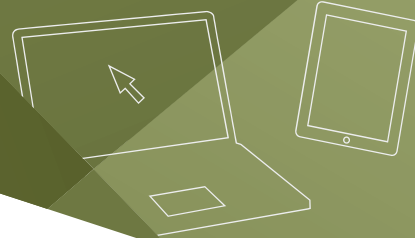
Basic SQL Operations: Insertion, alteration, deletion and querying

Using JOIN's (INNER, LEFT, RIGHT)

Construction of Sub-Queries

Data Aggregation Queries (w/ HAVING, GROUP BY, ...)

Particularities of the UNION clause



Syllabus

SQL for PRIMAVERA Introduction



In-class

Contacts

Portugal /
Tel 253 309 241

Angola /
Tel (+244) 222 440 450 /
222 440 447 / 921543587

Mozambique /
Tel (+258) 21 303 388 /
21 304 895 / 21 304 896

SQL in practice

Tables handling (Primary and Concatenated keys)
Visualization of tables structure of the SGP Applications Group.
Definition of Relational Structure between Tables (JOIN's).

Use of the Query Analyzer tool

- Passive and Active Queries.

Application of SQL concepts in handling specific issues (simulations in concrete cases).

Particularities of SQL in **MSDE/SQL Server** environment

- Referential Integrity
- Using Views